



ACEA

Association des
Constructeurs
Européens
d'Automobiles

Press Release

**PRESS EMBARGO FOR ALL DATA :
8.00 A.M.(6.00 A.M GMT), October 16, 2013**

Av. des Nerviens 85
B-1040 Bruxelles
Tel (32 2) 732 55 50
Fax (32 2) 738 73 10
(32 2) 738 73 11

PROVISIONAL NEW PASSENGER CAR REGISTRATIONS BY MARKET EUROPEAN UNION*

16/10/13

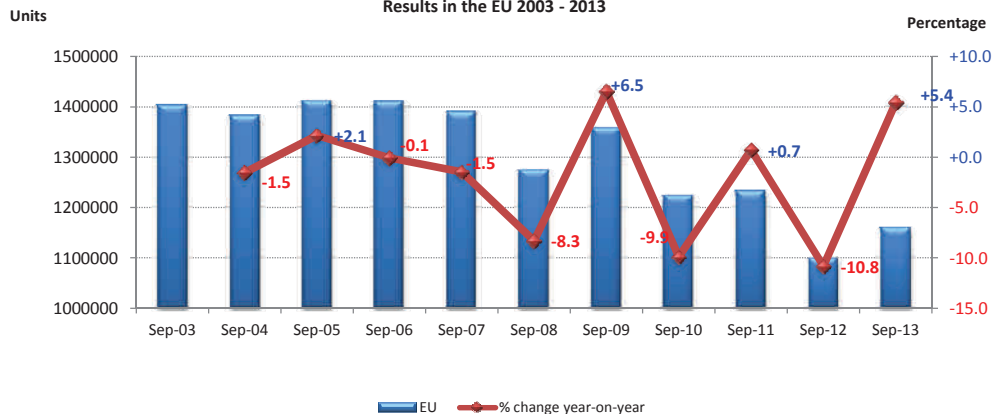
	September '13	September '12	% Chg 13/12	Jan - Sep '13	Jan - Sep '12	% Chg 13/12
AUSTRIA	25,301	27,094	-6.6	248,111	266,890	-7.0
BELGIUM	34,890	33,660	+3.7	389,471	386,733	+0.7
BULGARIA	1,558	1,347	+15.7	13,898	14,252	-2.5
CYPRUS	523	702	-25.5	5,437	8,892	-38.9
CZECH REPUBLIC	13,208	12,475	+5.9	120,154	131,059	-8.3
DENMARK	14,585	13,923	+4.8	135,170	128,549	+5.2
ESTONIA	1,564	1,442	+8.5	14,513	13,316	+9.0
FINLAND	8,214	8,002	+2.6	80,966	88,938	-9.0
FRANCE	142,166	137,536	+3.4	1,309,813	1,431,509	-8.5
GERMANY	247,199	250,082	-1.2	2,217,019	2,358,798	-6.0
GREECE	3,814	3,463	+10.1	44,013	45,538	-3.3
HUNGARY	4,659	3,525	+32.2	41,029	39,321	+4.3
IRELAND	3,175	2,483	+27.9	71,717	76,717	-6.5
ITALY	106,363	109,543	-2.9	1,000,032	1,091,073	-8.3
LATVIA	940	744	+26.3	7,763	7,995	-2.9
LITHUANIA	986	980	+0.6	8,893	9,190	-3.2
LUXEMBURG	3,158	3,340	-5.4	36,026	39,090	-7.8
NETHERLANDS	31,504	31,951	-1.4	301,805	427,222	-29.4
POLAND	21,628	18,854	+14.7	213,017	206,399	+3.2
PORTUGAL	7,367	6,357	+15.9	79,384	74,430	+6.7
ROMANIA	4,491	4,736	-5.2	41,073	49,128	-16.4
SLOVAKIA	5,084	7,329	-30.6	47,080	53,845	-12.6
SLOVENIA	3,990	3,203	+24.6	39,821	38,707	+2.9
SPAIN	45,175	35,148	+28.5	546,435	555,364	-1.6
SWEDEN	24,388	21,937	+11.2	193,065	203,711	-5.2
UNITED KINGDOM	403,136	359,612	+12.1	1,794,924	1,620,609	+10.8
EUROPEAN UNION (EU27)*	1,159,066	1,099,468	+5.4	9,000,629	9,367,275	-3.9
EU15	1,100,435	1,044,131	+5.4	8,447,951	8,795,171	-3.9
EU11*	58,631	55,337	+6.0	552,678	572,104	-3.4
ICELAND	350	470	-25.5	6,218	6,371	-2.4
NORWAY	12,168	11,134	+9.3	105,784	104,199	+1.5
SWITZERLAND	22,632	21,166	+6.9	226,266	245,526	-7.8
EFTA	35,150	32,770	+7.3	338,268	356,096	-5.0
EU27*+EFTA	1,194,216	1,132,238	+5.5	9,338,897	9,723,371	-4.0
EU15+EFTA	1,135,585	1,076,901	+5.4	8,786,219	9,151,267	-4.0

(*) data for Malta currently not available.

For further information, please contact: Ms. Quynh-Nhu Huynh - Director Economics & Statistics - E-mail: qh@acea.be - Tel. (32) 2 738 73 55

New Passenger Car Registrations in September

Results in the EU 2003 - 2013



Next press release: Tuesday, November 19, 2013

This information is available on the ACEA website: <http://www.acea.be>

P r e s s R e l e a s e

P R O V I S I O N A L

NEW PASSENGER CAR REGISTRATIONS BY MANUFACTURER

EU* + EFTA Countries

16/10/13

	September					January - September				
	%Share		Units	Units	% Chg	%Share		Units	Units	% Chg
	'13	'12	'13	'12	13/12	'13	'12	'13	'12	13/12
ALL BRANDS**			1,194,216	1,132,238	+5.5			9,338,897	9,723,371	-4.0
VW Group	23.7	23.7	283,317	267,796	+5.8	24.9	24.8	2,321,328	2,409,119	-3.6
VOLKSWAGEN	11.5	11.9	137,316	134,494	+2.1	12.4	12.8	1,159,174	1,243,969	-6.8
AUDI	5.6	5.7	66,826	64,785	+3.2	5.7	5.6	533,867	549,085	-2.8
SEAT	2.1	1.9	24,570	21,280	+15.5	2.4	2.1	219,561	199,887	+9.8
SKODA	4.2	3.8	50,402	43,223	+16.6	4.0	3.9	372,812	378,451	-1.5
Others (1)	0.4	0.4	4,203	4,014	+4.7	0.4	0.4	35,914	37,727	-4.8
PSA Group	9.9	10.8	118,212	121,925	-3.0	10.9	11.8	1,017,649	1,147,449	-11.3
PEUGEOT	5.6	6.0	66,620	68,126	-2.2	6.0	6.4	560,059	619,599	-9.6
CITROEN	4.3	4.8	51,592	53,799	-4.1	4.9	5.4	457,590	527,850	-13.3
RENAULT Group	7.9	6.9	94,907	77,903	+21.8	8.7	8.3	807,982	807,098	+0.1
RENAULT	6.1	5.5	73,023	62,226	+17.4	6.3	6.5	592,416	627,770	-5.6
DACIA	1.8	1.4	21,884	15,677	+39.6	2.3	1.8	215,566	179,328	+20.2
GM Group	8.4	8.4	100,463	95,342	+5.4	8.0	8.2	748,026	800,862	-6.6
OPEL/VAUXHALL	7.4	7.4	87,968	83,399	+5.5	6.8	6.8	634,040	659,508	-3.9
CHEVROLET	1.0	1.1	12,461	11,912	+4.6	1.2	1.4	113,667	140,968	-19.4
GM (US)	0.0	0.0	34	31	+9.7	0.0	0.0	319	386	-17.4
FORD	8.1	8.2	97,028	92,442	+5.0	7.4	7.6	693,936	735,680	-5.7
BMW Group	7.4	7.3	88,556	83,197	+6.4	6.5	6.2	603,544	602,019	+0.3
BMW	5.9	5.8	70,327	65,512	+7.3	5.2	5.0	486,736	482,073	+1.0
MINI	1.5	1.6	18,229	17,685	+3.1	1.3	1.2	116,808	119,946	-2.6
FIAT Group	5.4	5.9	64,806	67,103	-3.4	6.1	6.4	572,676	624,149	-8.2
FIAT	4.2	4.4	50,417	50,242	+0.3	4.8	4.7	444,079	452,219	-1.8
LANCIA/CHRYSLER	0.5	0.7	5,960	7,440	-19.9	0.6	0.8	57,253	74,474	-23.1
ALFA ROMEO	0.5	0.6	5,889	6,950	-15.3	0.5	0.7	50,766	72,184	-29.7
JEEP	0.2	0.2	2,251	2,196	+2.5	0.2	0.2	17,193	21,243	-19.1
Others (2)	0.0	0.0	289	275	+5.1	0.0	0.0	3,385	4,029	-16.0
DAIMLER	5.7	5.4	68,295	60,803	+12.3	5.6	5.1	523,165	499,293	+4.8
MERCEDES	5.3	4.9	62,900	55,269	+13.8	5.1	4.6	473,879	444,721	+6.6
SMART	0.5	0.5	5,395	5,534	-2.5	0.5	0.6	49,286	54,572	-9.7
TOYOTA Group	4.6	4.6	55,464	52,265	+6.1	4.4	4.4	407,072	423,289	-3.8
TOYOTA	4.4	4.4	52,209	49,450	+5.6	4.2	4.1	389,897	401,498	-2.9
LEXUS	0.3	0.2	3,255	2,815	+15.6	0.2	0.2	17,175	21,791	-21.2
HYUNDAI	3.6	3.5	42,698	40,138	+6.4	3.5	3.4	327,907	333,103	-1.6
NISSAN	3.7	3.9	43,916	44,033	-0.3	3.5	3.5	327,315	340,232	-3.8
KIA	2.9	3.1	35,042	35,131	-0.3	2.8	2.7	258,545	257,760	+0.3
VOLVO CAR CORP.	1.9	1.8	22,962	20,302	+13.1	1.7	1.8	162,750	171,451	-5.1
MAZDA	1.4	1.2	16,997	13,050	+30.2	1.2	1.0	114,004	100,419	+13.5
SUZUKI	1.4	1.4	16,314	15,665	+4.1	1.2	1.3	113,194	123,056	-8.0
HONDA	1.4	1.7	16,509	19,049	-13.3	1.2	1.1	110,975	111,349	-0.3
JAGUAR LAND ROVER	1.5	1.4	18,092	16,367	+10.5	1.1	1.0	105,427	95,763	+10.1
LAND ROVER	1.2	1.1	13,941	12,554	+11.1	0.9	0.8	83,468	77,240	+8.1
JAGUAR	0.3	0.3	4,151	3,813	+8.9	0.2	0.2	21,959	18,523	+18.5
MITSUBISHI	0.6	0.6	7,260	6,295	+15.3	0.6	0.6	56,528	60,887	-7.2
OTHER**	0.3	0.3	3,378	3,432	-1.6	0.7	0.8	66,874	80,393	-16.8

(1) VW Group: VW 'other' include Bentley, Bugatti, Lamborghini, and since Aug '12 Porsche

(2) FIAT Group: FIAT 'other' include Dodge, Ferrari, Maserati

(*) data for Malta n.a.

(**) ACEA estimates

For further information, please contact:

Ms. Quynh-Nhu Huynh - Director Economics & Statistics

E-mail: qh@acea.be - Tel. (32) 2 738 73 55